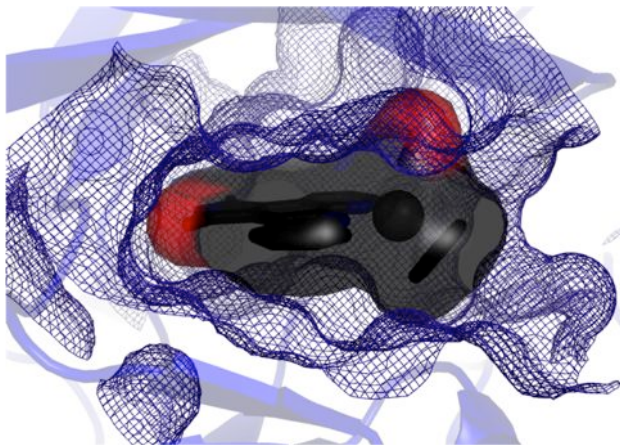


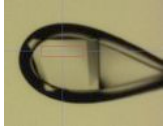
EXPOSE

DATA COLLECTION SERVICE

**Services in Protein Crystallography
at the Swiss Light Source**



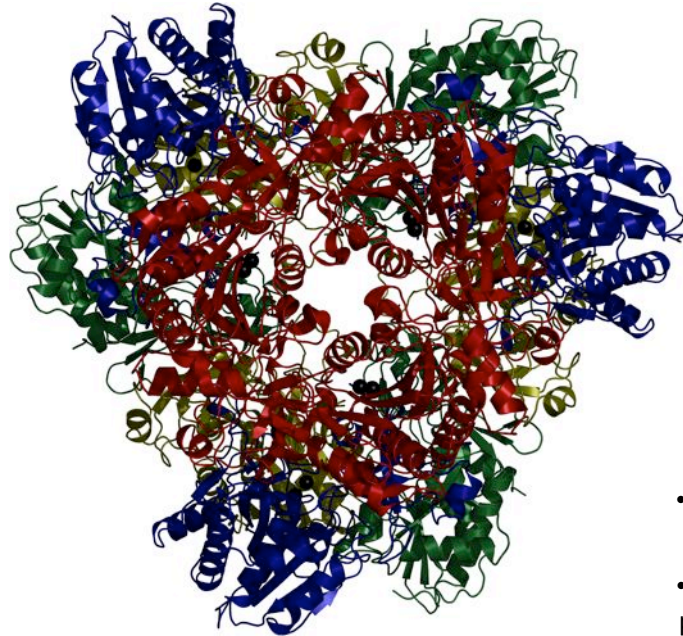
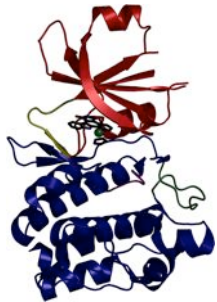
Data collection service



- X-ray data collection of protein and small molecule crystals at the SLS
- testing and screening of crystals
- data processing according to desired cutoffs
- support during planning of diffraction experiments

Structure solution service

- protein structure solution by molecular replacement or experimental phasing
- model building and structure refinement, including ligand refinement
- support in interpretation of results



Benefits for you as our customer

far away, especially from overseas

- independent from local synchrotrons and their shutdown periods, you get your samples measured at a state of the art synchrotron
- missing travel expenses and travel times for your personnel increases the productivity and lowers your costs

near, such as central Europe

- time gain accelerating your structure-based drug discovery cycle
- if everything is set up accordingly, it's easily possible that you have your structure ready to use 24 hours after you have send them to the synchrotron

Philosophy

Our services in protein crystallography are designed for regular industrial users and optimized towards flexibility and productivity. Instead of offering standardized service packages, we try to fit as neatly as possible into the customers existing processes and information flow.

Prices

Our services are billed by time. For the rates of our data collection service and our structure solution service please contact Dr. Joachim Diez. diez@expose-crystals.com



www.expose-crystals.com

diez@expose-crystals.com

Expose GmbH
c/o Joachim Diez
Hauptstrasse 30
CH-5312 Döttingen
Switzerland

Enhance your drug discovery cycle